

From **October 11** to **December 2, 2022**, an online survey was administered to students and staff, and distributed to parents, asking for feedback on programs and supports for students, overall school climate, and educational partner engagement.



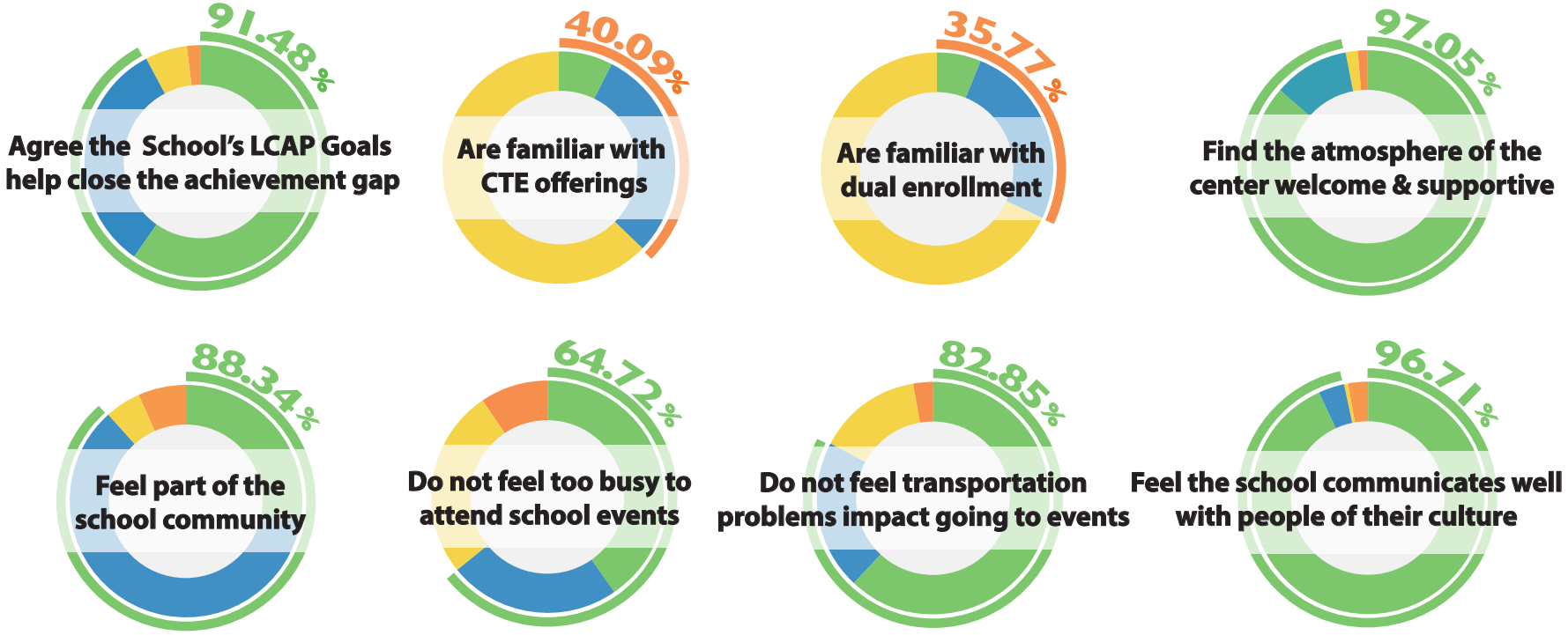
A total of **176** responses reflect the views of...

**13**  
staff

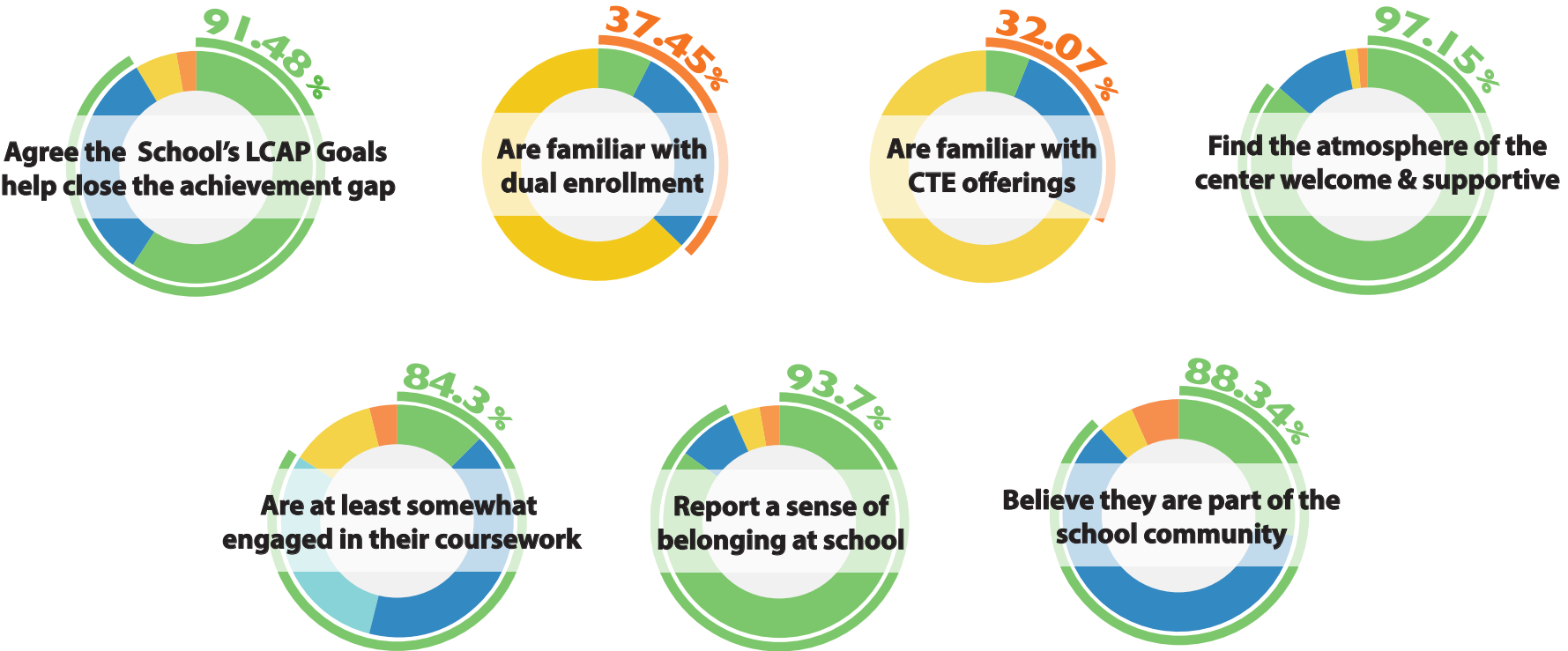
**57**  
parents/guardians

**106**  
students

## Parent / Guardian Insights



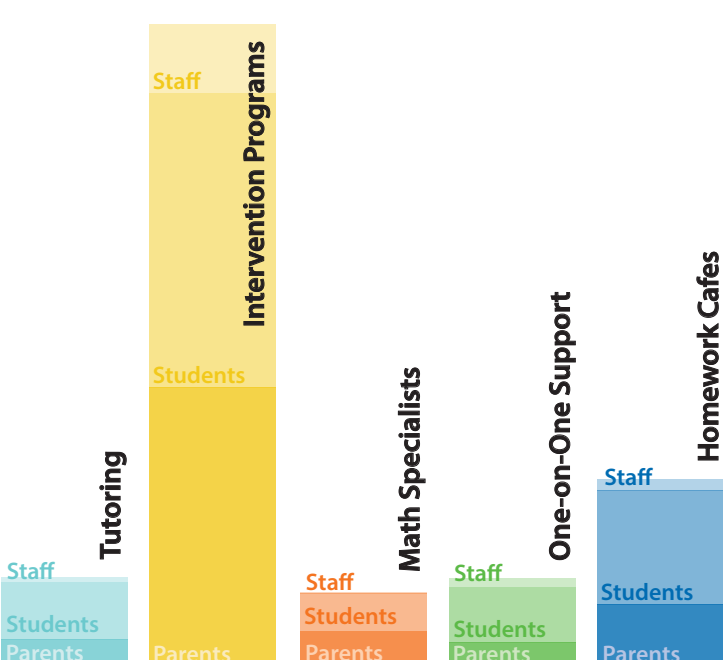
## Student Insights



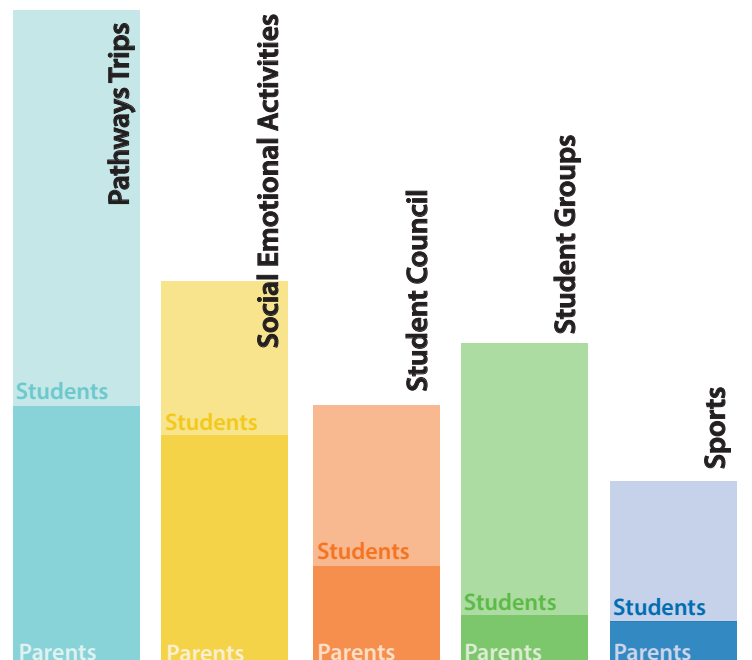
## Staff Insights



## All Groups



Of these intervention opportunities, which do you believe is most valuable?



Of these interventions opportunities, which do you believe is most valuable?

